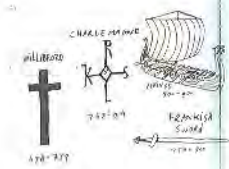


100

mg

ML

**PLEASE  
SEND YOUR  
FEEDBACK,  
CONTRIBUTIONS  
AND COMMENTS  
TO [WWW.100M2.NL](http://WWW.100M2.NL)**



3000

-800

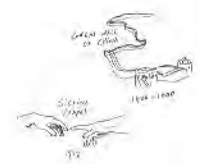
0

800

1250

1400

1500



# 100m<sup>2</sup>



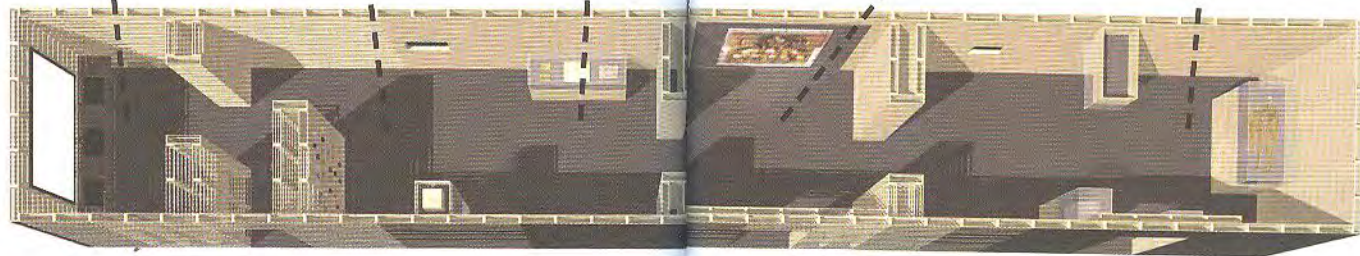
Twentieth Century

Industrialisation

Golden Age

The Iconoclasm

Traces









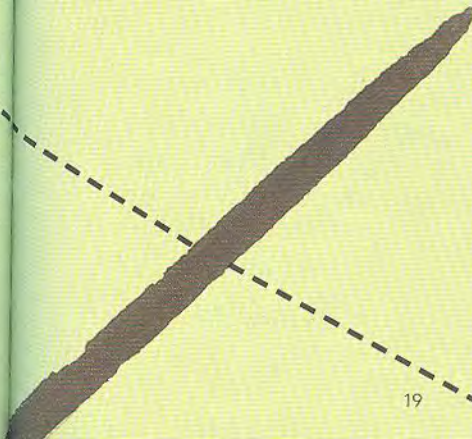


'The Weerdinge couple'  
bog bodies  
170 B.C. – 140 A.D.  
Drents Museum, Assen

These two bodies were found in 1904 near the Drenthe village of Weerdinge by peat worker Hilbrand Gringhuis. Because peat hardly contains any oxygen, they have been mummified. For a long time we thought they were a couple, but in fact they are two men. The thrust of a knife has exposed the intestines of the body on the right. It is assumed that the men were punished or sacrificed.

Frankish sword  
c. 775 – 825 A.D.  
The Dutch National Museum  
of Antiquities, Leiden

This sword, which was found in the IJssel river at Rheden, belonged to a Frankish nobleman. In the eighth and ninth centuries, the Franks encountered the Vikings, who travelled to the Rhine delta in their fast ships to trade and sometimes to loot. The Vikings were attracted by the hard-wearing swords that could be made from ore found there. Their own swords sometimes had to be bent back into shape by foot after a strong blow.





history **in**nl NATIONAAL  
HISTORISCH  
MUSEUM  
OF NATIONAL  
HISTORY